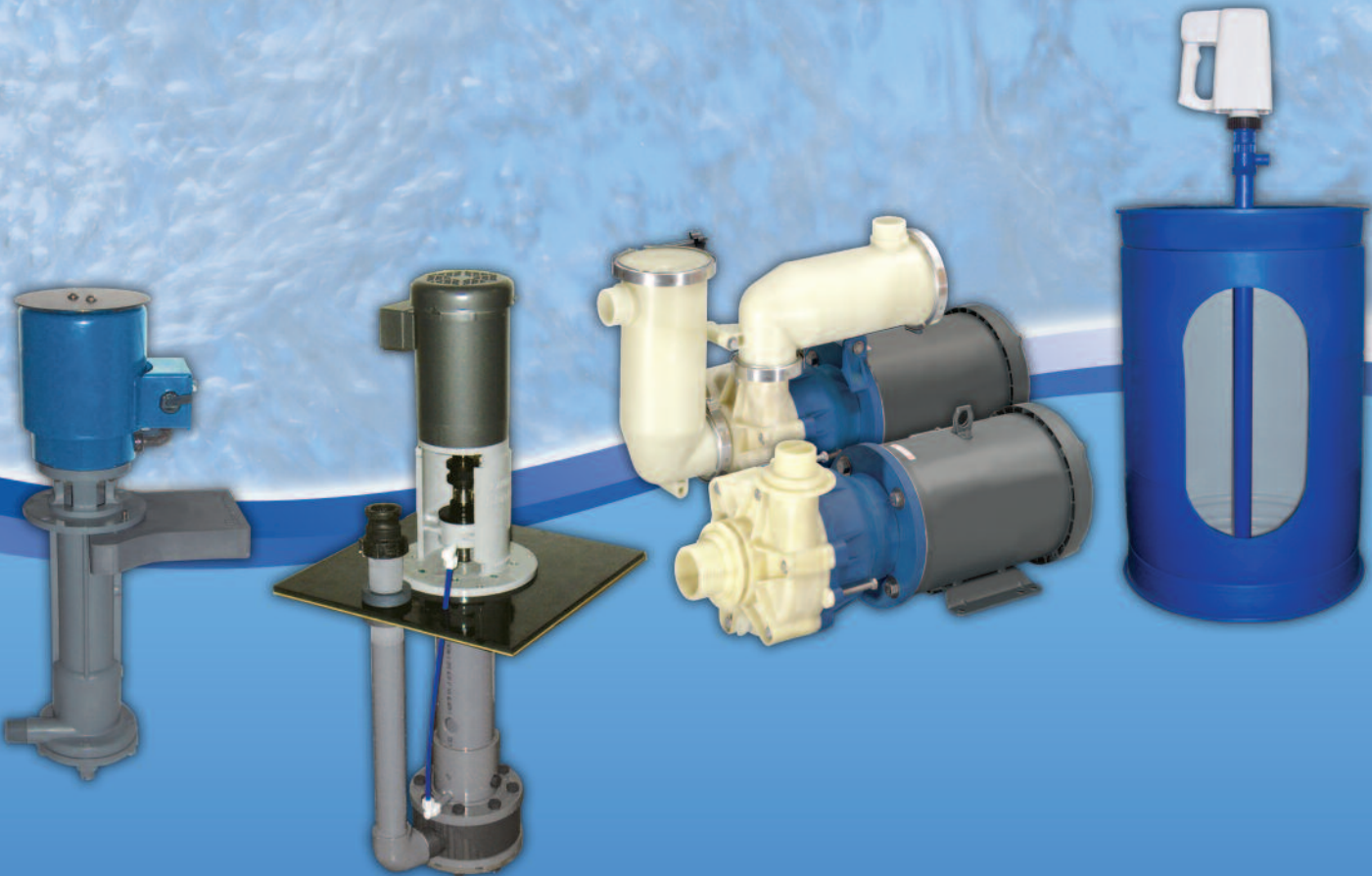


SETHCO® PROCESS INDUSTRY PUMPS

Global Pumping Solutions for Filtration, Recirculation, and Transfer Applications



PROVIDING FLUID HANDLING TECHNOLOGY SINCE 1972

Sethco is a leading manufacturer of horizontal and vertical corrosion resistant centrifugal pumps, with capacities to 250 GPM (57 m³/hr). Designed, engineered, and manufactured from both high strength thermoplastics and stainless steel, Sethco's products are field-proven and provide the solution to your most difficult fluid handling applications. A variety of pump configurations, ranging from off-the-shelf drum pumps, to a full range of magnetic drive centrifugal pumps, to custom engineered vertical sump pumps, makes Sethco adaptable to almost any pumping application.

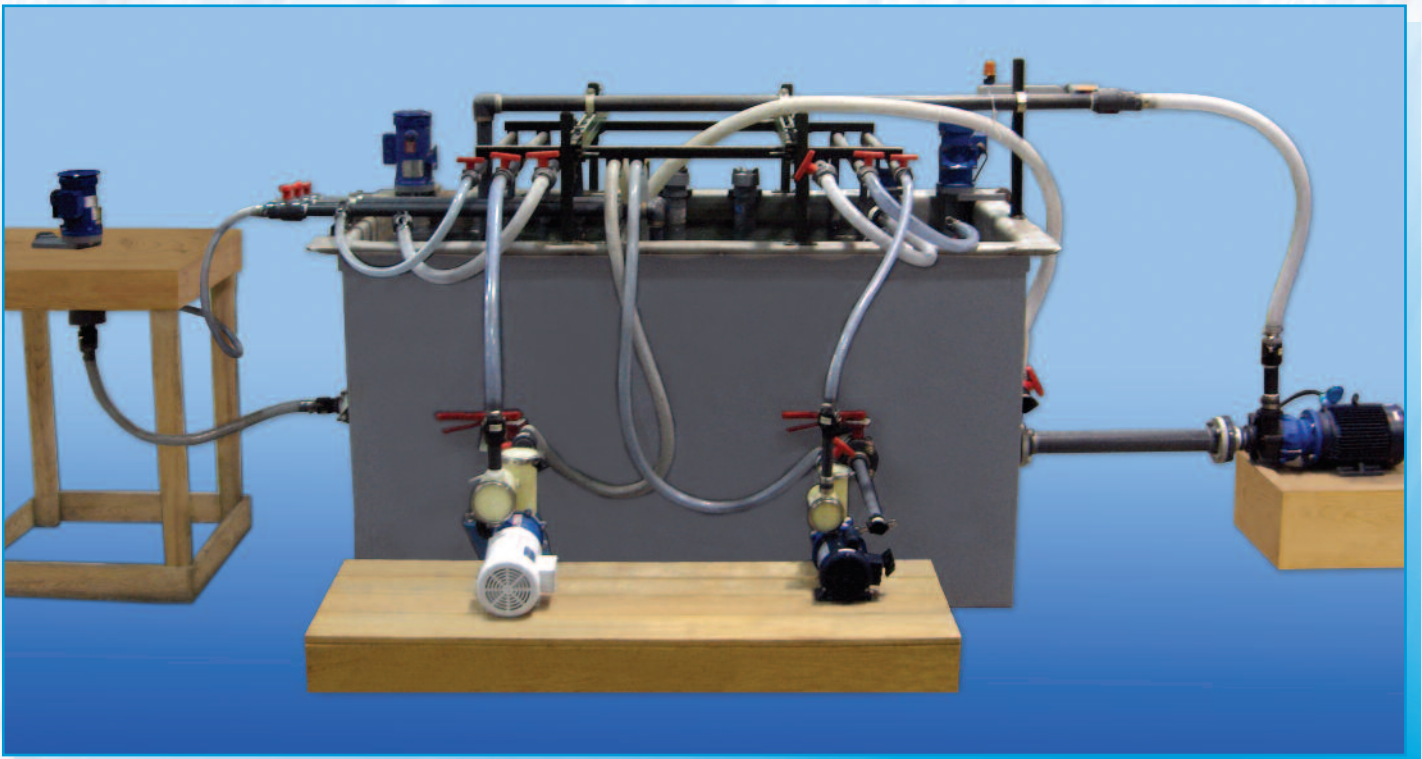
MARKETS

- Aerospace
- Aquaculture
- Aquariums
- Automotive
- Chemical Process
- Electronics
- Laboratory
- Metal Finishing
- Municipal
- Painting
- Pharmaceutical
- Photo Processing
- Pulp and Paper
- Semiconductor

APPLICATIONS

- Acids
- Bleaches
- Caustics
- Chemical Transfer
- Cleaning/Mixing
- Filtration
- Ideal for OEMs
- Processing
- Recirculation
- Reverse Osmosis
- Scrubber
- Seawater
- Solvents
- Wastewater

SETHCO TEST TANK



Test tank designed for run test and evaluation of all pump assemblies prior to shipment.

SEALLESS DRUM PUMPS

P90 SERIES DRUM PUMPS

High powered sealless drum pumps designed to handle aggressive, corrosive, and hazardous fluids. All drum pumps are in stock and available for immediate delivery.

- Capacities to 35 GPM (135 LPM)
- Heads to 39 feet (12 m)
- Tube lengths in 10 inch (254 mm) increments from 30 inches (762 mm) to 60 inches (1524 mm)
- Explosion proof, electric or air motors suitable for 50/60 hz operation
- Polypropylene, Kynar or 316SS construction

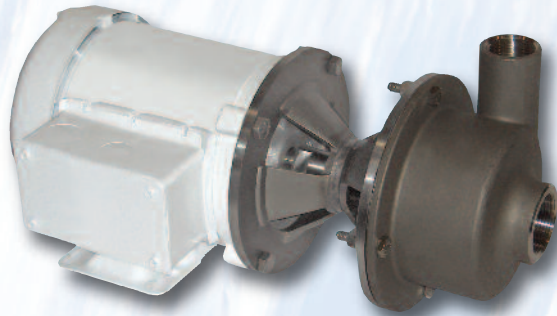


Polypropylene Kynar 316SS

HORIZONTAL CENTRIFUGAL PUMPS

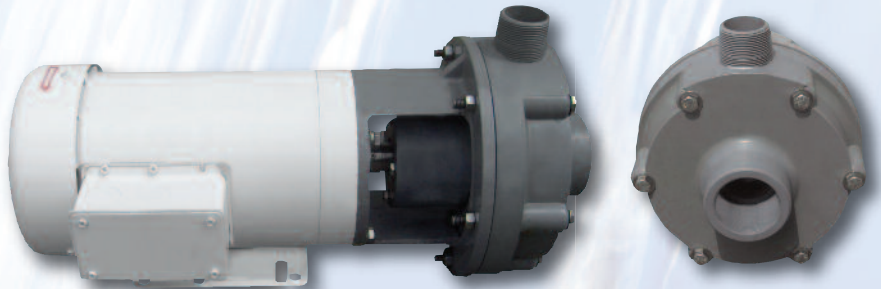
316 STAINLESS STEEL END SUCTION PUMPS

- Four close coupled sizes
- Capacities to 105 GPM (400 LPM)
- Heads to 72 feet (22 m)
- Motors from 1/6 to 2 hp (0.12 to 1.5 kW)
- Multiple mechanical seal options



FORGED CPVC END SUCTION PUMPS

- Close coupled or frame mounted pumps available in two sizes
- Capacities to 240 GPM (55 m³/hr)
- Heads to 140 feet (43 m)
- Motors from 1 to 10 hp (0.75 to 7.5 kW)
- Open or closed impeller options
- Flanged inlet and outlet connections are available



MAGNETIC DRIVE HORIZONTAL CENTRIFUGAL PUMPS

500 SERIES SELF-PRIMING PUMPS

- Capacities to 27 GPM (102 LPM)
- Heads to 36 feet (11 m)
- Motors from 1/4 to 3/4 hp (0.19 to 0.56 kW)



500 SERIES END SUCTION PUMPS

- Capacities to 30 GPM (114 LPM)
- Heads to 38 feet (12 m)
- Motors from 1/4 to 3/4 hp (0.19 to 0.56 kW)

1000 SERIES SELF-PRIMING PUMPS

- Capacities to 76 GPM (288 LPM)
- Heads to 66 feet (20 m)
- Motors from 1/2 to 3 hp (0.37 to 2.2 kW)



1000 SERIES END SUCTION PUMPS

- Capacities to 96 GPM (365 LPM)
- Heads to 80 feet (24 m)
- Motors from 1/2 to 3 hp (0.37 to 2.2 kW)

2500 SERIES SELF-PRIMING PUMPS

- Capacities to 230 GPM (52 m³/hr)
- Heads to 93 feet (28 m)
- Motors from 3 to 10 hp (2.2 to 7.5 kW)



2500 SERIES END SUCTION PUMPS

- Capacities to 250 GPM (57 m³/hr)
- Heads to 94 feet (29 m)
- Motors from 3 to 10 hp (2.2 to 7.5 kW)

NOTE: All magnetic drive horizontal pumps are of Polypropylene or Kynar construction for optimum corrosion resistance.

VERTICAL CENTRIFUGAL SUMP PUMPS

UD/UV SERIES SUMP PUMPS

- Capacities to 220 GPM (50 m³/hr)
- Heads to 135 feet (41 m)
- Lengths from 2 to 10 feet (0.6 to 3.0 m)
- Motors from 1/2 to 15 hp (0.37 to 11 kW)
- CPVC/PVC pump construction
- 316SS, Carp-20, Titanium or Hastelloy-C shafts
- Internal, external or bypass bearing lubrication
- Multiple liquid level control options



CANTILEVER DESIGN SEALLESS PUMPS

ZDX/ZKX SERIES IN-TANK OR OUT-OF-TANK PUMPS

- Eighteen sizes
- Capacities to 185 GPM (45 m³/hr)
- Heads to 124 feet (38 m)
- Motors from 1/20 to 7.5 hp (0.04 to 5.6 kW)
- CPVC and Kynar construction



ZSX SERIES IN-TANK OR OUT-OF-TANK PUMPS

- Three sizes
- Capacities to 100 GPM (380 LPM)
- Heads to 68 feet (21 m)
- Motors from 3/4 to 2 hp (0.6 to 1.5 kW)
- 316SS construction



ABOUT MET-PRO GLOBAL PUMP SOLUTIONS

Met-Pro Global Pump Solutions, which combines the resources of the Company's internationally recognized Dean®, Fybroc® and Sethco® brands, is a leading niche-oriented global provider of solutions and products for the pumping of corrosive, abrasive and high temperature liquids. Its broad range of high quality centrifugal pumps provide excellent performance for tough applications including pumping of acids, brines, caustics, bleaches, seawater, high temperature liquids and a wide variety of waste liquids for a broad range of applications including the chemical, petrochemical, metal finishing, wastewater treatment, desalination and aquarium/aquaculture markets.

ABOUT CECO

CECO Environmental is a leading global environmental technology company focused on critical solutions in the air pollution control, energy and fluid handling and filtration industries. Through its well-known brands, CECO provides a wide spectrum of products and services that play a vital role in helping companies achieve exacting production standards, and meet increasing plant needs and stringent emissions control regulations. For more information, visit the company's website at www.cecoenviro.com.



A CECO Environmental Company

800 Emlen Way, Telford, PA 18969
P: 800.645.0500 • F: 215.799.0920
info@sethco.com • www.sethco.com